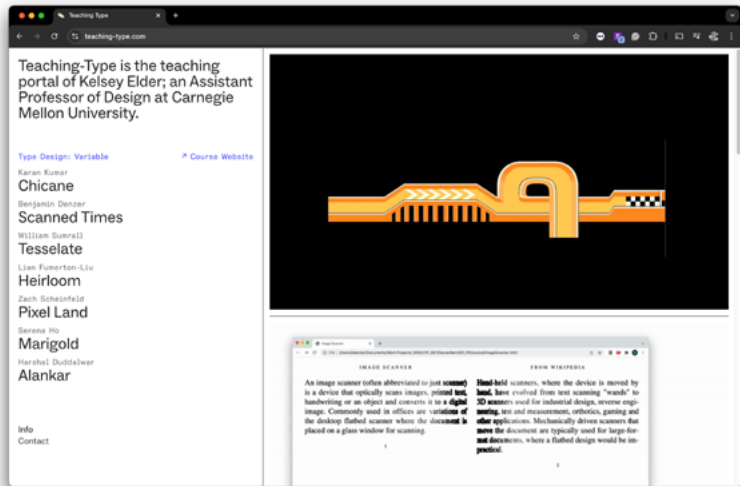




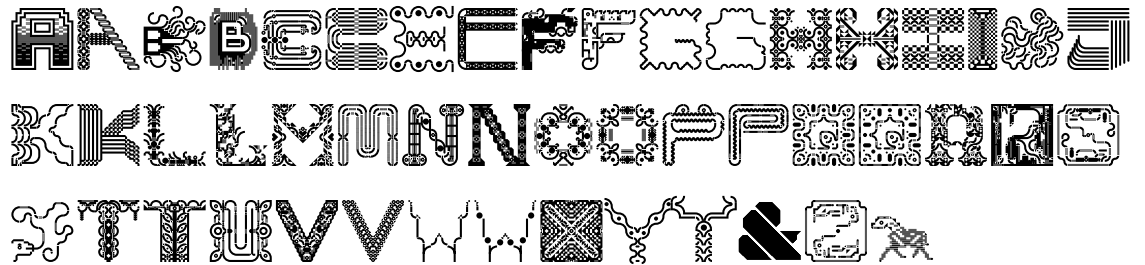
↗ VIEW COURSE WEBSITE



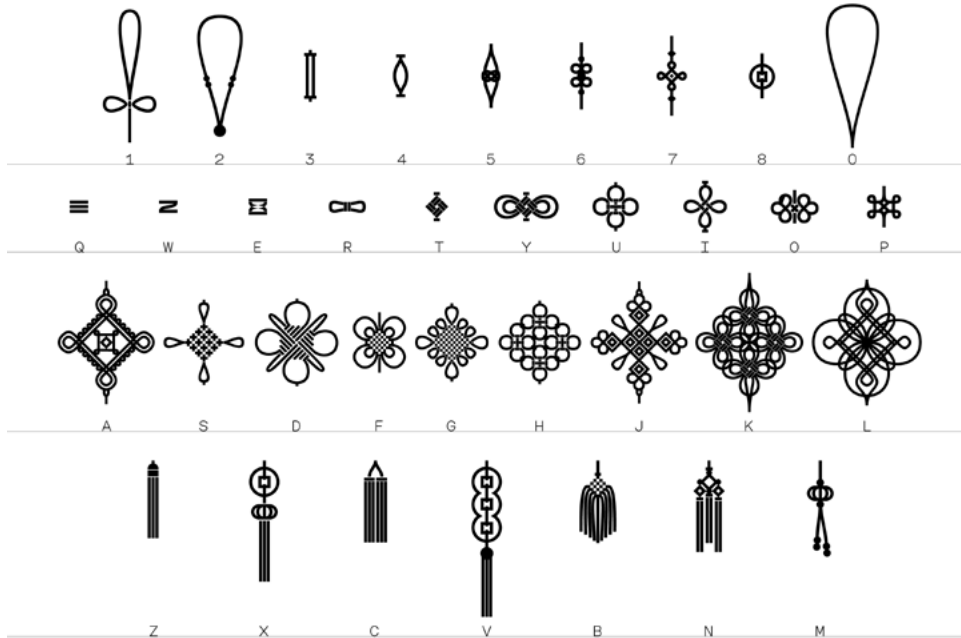
↑ workshop and printing for P1: Balance Bike (CMU 2024)



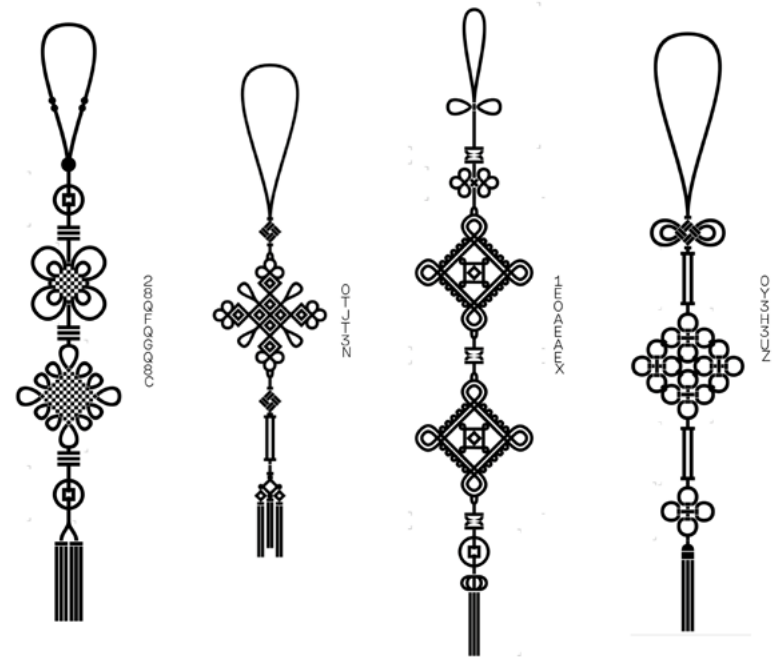
↗ VIEW STUDENT EXAMPLE WEBSITE



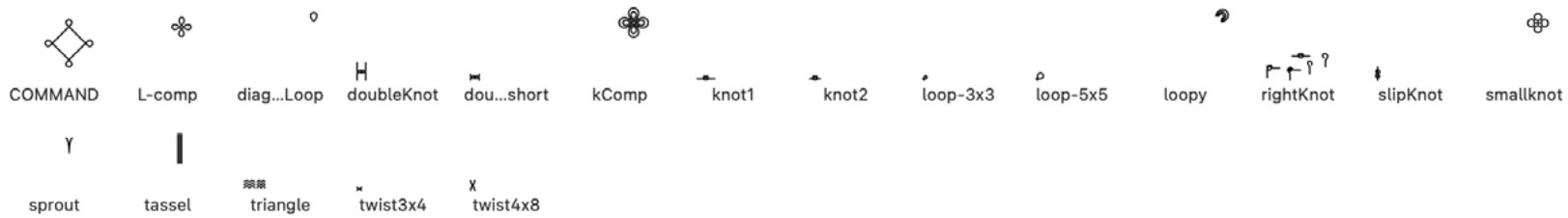
↑ overview of collaborative outcome (CMU 2024)



↑ demo character set w/ vertical setting



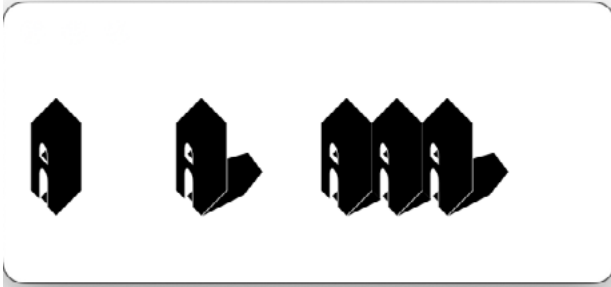
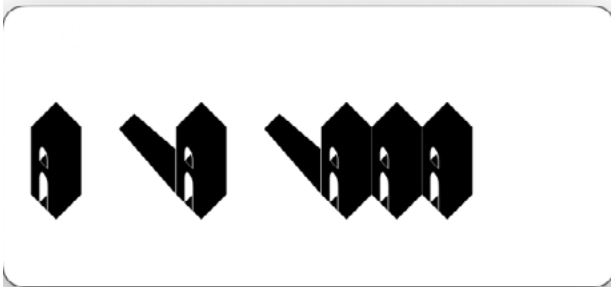
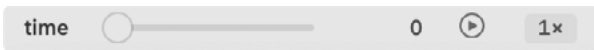
### Other



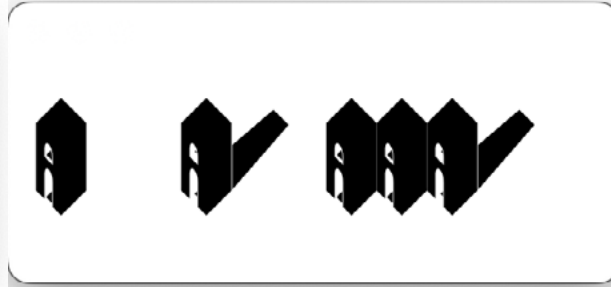
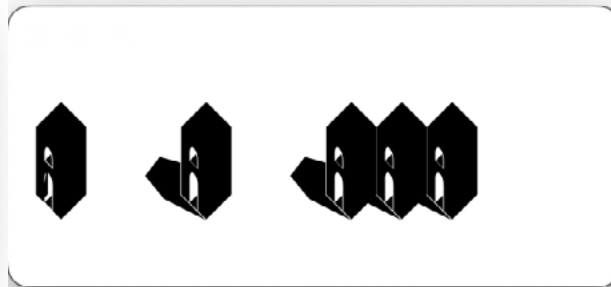
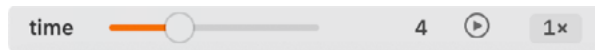
↑ kit of shapes (components)



↑ demo character set w/ positional features



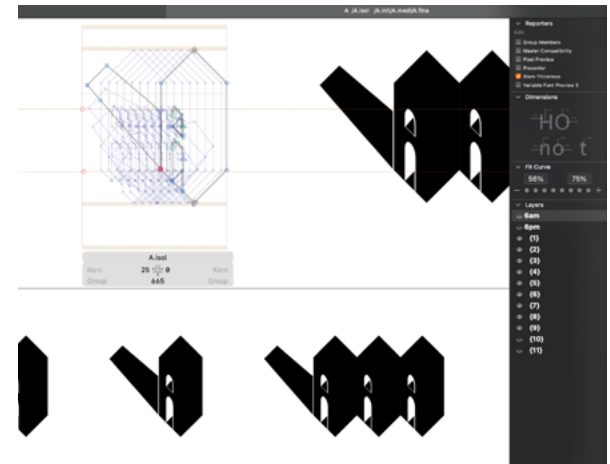
↑ demo of interpolation of positional forms



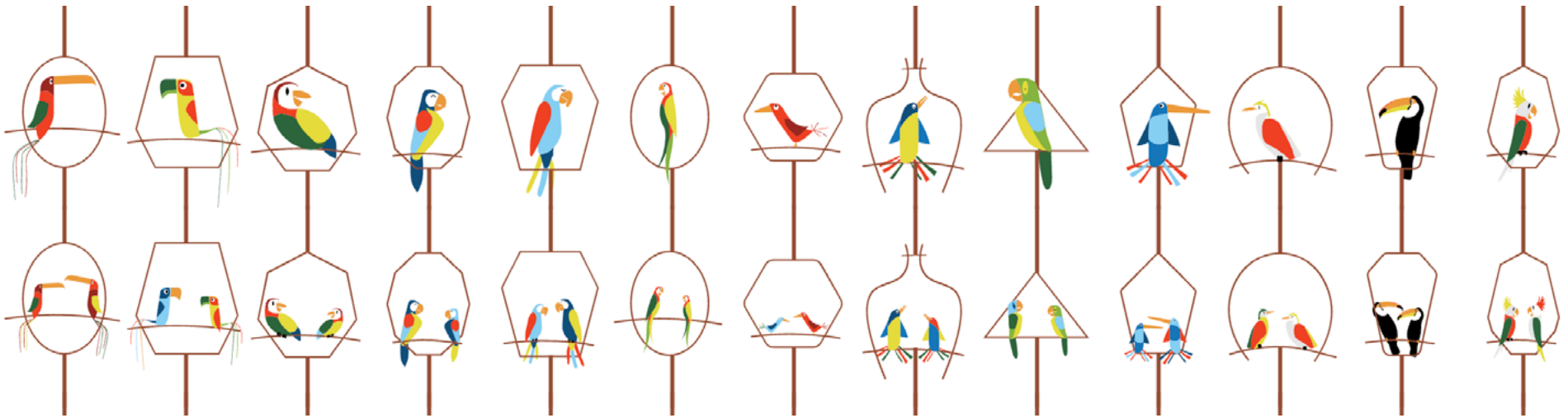
```

fontTools final type-ke-var2-re...
Font Masters Exports Features Other Notes
active Generate feature automatically
# BEGIN POSITIONAL ALTERNATES
lookup InitForms {
  ignore sub @AllLetters @InitDef';
  sub @InitDef' by @InitSub;
} InitForms;
lookup MediForms {
  sub @AllLetters @MediDef' @AllLetters by @MediSub;
} MediForms;
lookup FinaForms {
  ignore sub @finaDef' @AllLetters;
  sub @finaDef' by @finaSub;
} FinaForms;
lookup IsolForms {
  ignore sub @isolDef' @AllLetters, @AllLetters @isolDef';
  sub @isolDef' by @isolSub;
} IsolForms;
# END POSITIONAL ALTERNATES
  
```

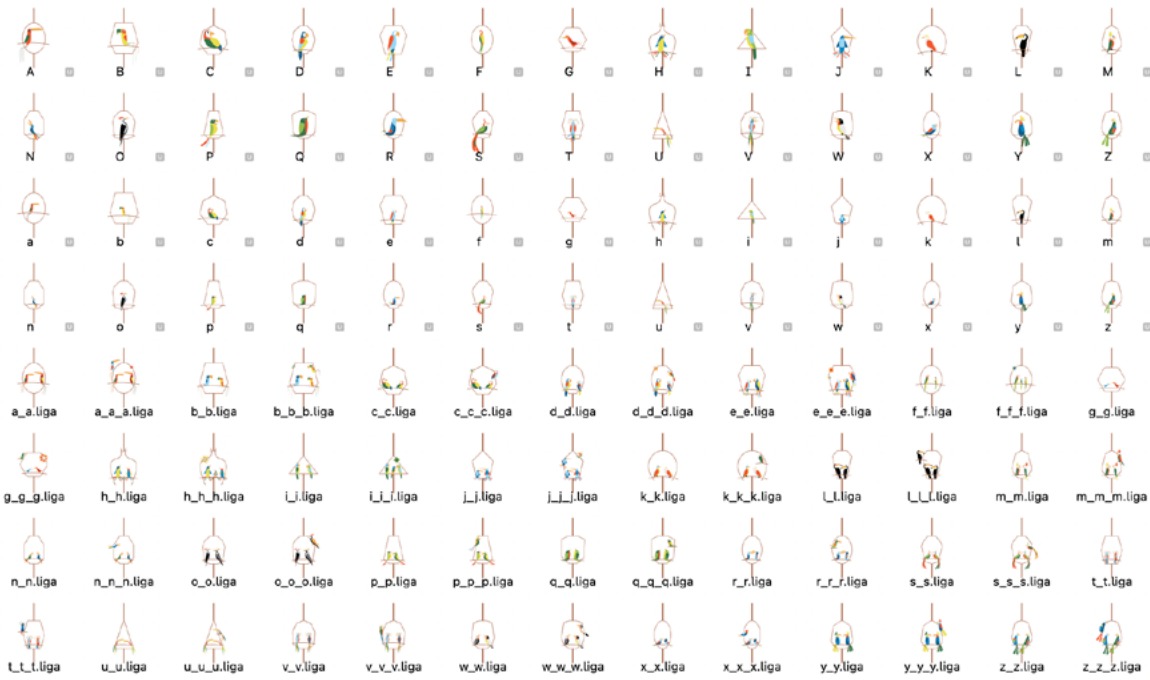
↑ positional feature code



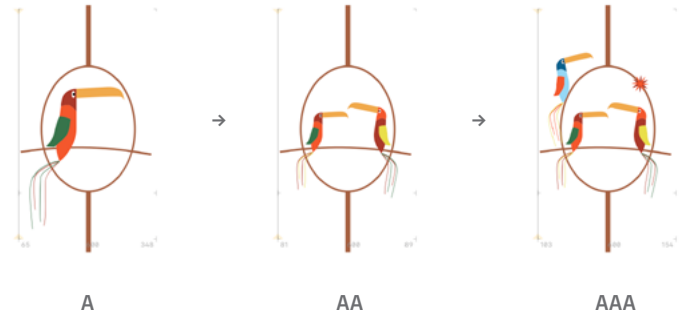
↑ instance set up for rotational/non-linear interpolation



↑ demo vertical setting w/ ligatures on bottom row



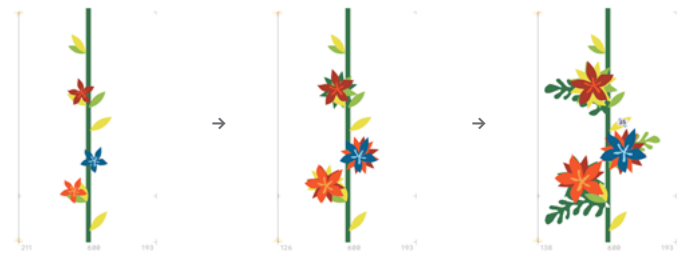
↑ extended character set w/ ligatures



A

AA

AAA



3

33

333

